



A culture of sound

Product Guide



SOFTWARE

Prediction, control, DSP updates, management system...all our softwares are designed in-house and are a fundamental part of the Lynx Pro Audio technology.

They are designed by and for sound technicians, with a very intuitive interface easy to use.



OCS

Control and monitoring software for multiple devices (loudspeakers, amplifiers and processors). Allows control via Ethernet / USB for Lynx Pro Audio systems with integrated DSP.

It controls the powered cabinets in real time and obtain detailed information of cabinet behavior



DSX

Control software for the digital processor of the DSX Series power amplifiers.

It works via USB or Ethernet and is the interface to configure all the parameters of the DSX amps.



CABINET UPDATER

It updates the presets of your powered cabinets. Just connect the cabinet by USB to your PC.

This software will automatically detects your cabinet hardware and updates the presets to the latest and optimum configuration available.



RAINBOW

Acoustical Prediction software based on polar response measurements.

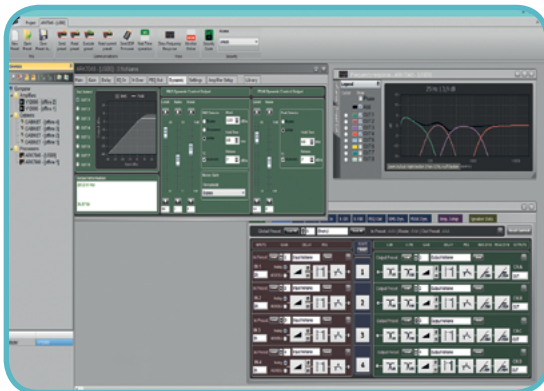
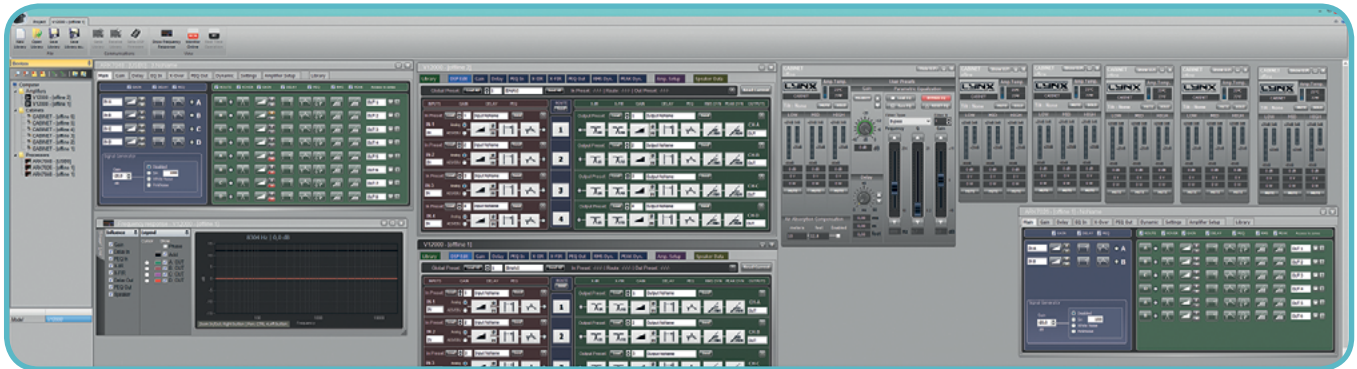
Thanks to this software you will be able to "virtually" determine the acoustical response of one or various cabinets at the same time.

OCS is our control software, working in real time for all our digital processing systems. It is a user interface enabling the set-up of all digital devices in an installation.

With OCS you can configure / monitor all the parameters of a self-powered Lynx Pro Audio system (Input levels, cabinet angles, module temperature, compression levels....), all parameters available in our processors and all settings for our HPX amplifiers, from the input sensitivity to the digital process for each channel independently.

OCS enables configuration from one single software system for all devices connected to an Ethernet network.

OCS incorporates direct communication with Smaart(R) measurement system. Through our Smart Link we can connect to any of Smaart(R) session connected to the local network. This allows us to see, in real time, the captured measurement directly in our process window.





Rainbow

Thanks to the Rainbow software, you will be able to “virtually” determine the acoustical response of one or various cabinets at the same time.

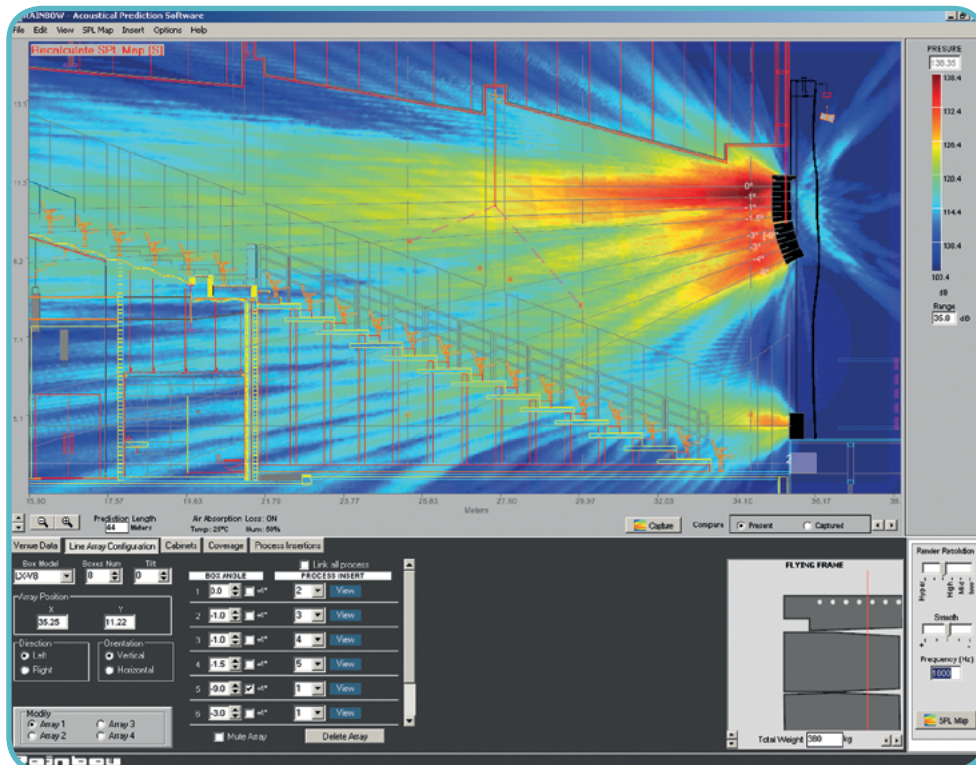
Based on polar response measurements, taken meticulously with a 360° coverage both vertically and horizontally, the Rainbow software is able to calculate the SPL response including the interaction between them taking into account the magnitude and phase response, in order to enable the user to correct cancellations and even to create them if the acoustical design so requires.

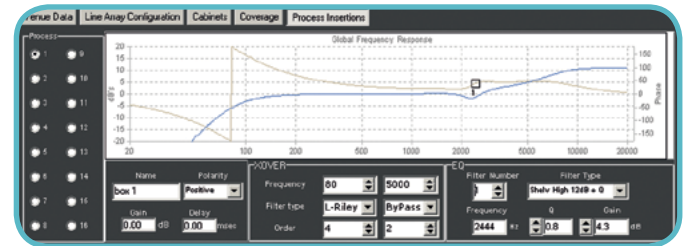
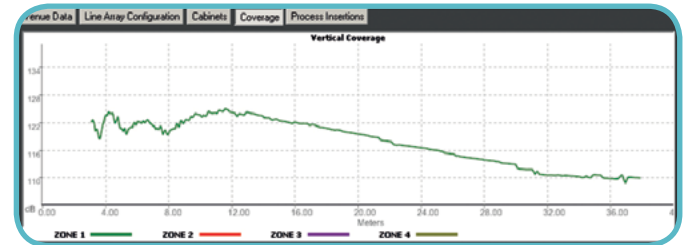
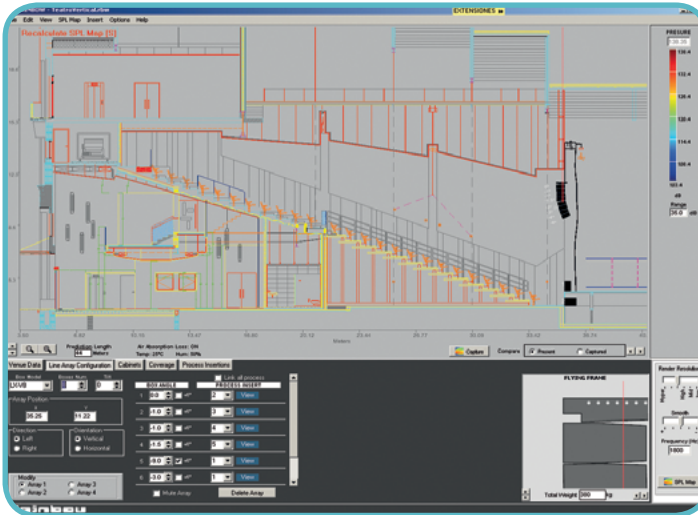


Rainbow is very easy to use and offers a very intuitive design, multitool interface and on-line updatable data base.

The Rainbow software has been designed by and for sound technicians. Its aim is to help installers and users of Lynx pro audio products.

This software is able to import WMF Vector Files with technical drawings and insert them directly into the prediction window and thus enabling real measurement predictions. This also helps to determine dead zones and obtain the maximum performance from each of the cabinets installed.





The RAINBOW acoustical prediction software allows among other things:

- Prediction up to 4 LINE ARRAYS of 24 cabinets each simultaneously, together with multiple points with cabinets
- Flying points information according to the inclination of the cabinets
- Weight calculation of the different systems
- Sub-bass simulation (for instance to achieve cardioid configurations)
- Orientation of cabinets (Horizontal/vertical)
- Throw Direction of cabinets (right/ left)
- Individual delay per cabinet/system
- Polarity selection for each cabinet
- Up to 40 process insertions with Equalization and CrossOver
- assignable per cabinet.
- Simulation of the Air absorption sound loss with the distance
- SPL Pressure information
- Distance measurement
- Import of CAD files
- Up to 4 audience or hearing zones
- Coverage curves on the hearing zones.
- Export of SPL Map and coverage curves on jpg or bmp format
- Print project report (SPL prediction, flying points, weights, cabinet inclination, polarities, process applied, EQ Curves...)

You can find us in all these social media:



The technical specifications described in this catalogue can vary without previous notification.

If you want to receive the printed version of this catalogue just click here:
info@lynxproaudio.com

